

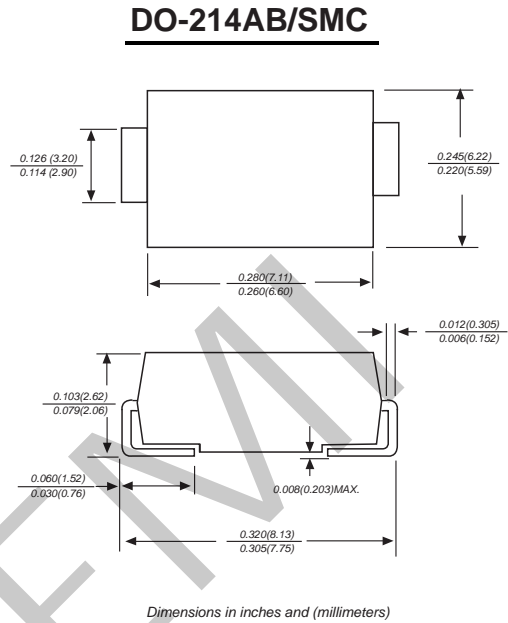
Reverse Voltage: 50 to 600 Volts  
 Forward Current: 3.0 Amperes

### Features

- The plastic package carries Underwriters Laboratory Flammability Classification 94V-0
- Idea for printed circuit board
- Glass passivated Junction chip
- Low reverse leakage
- High forward surge current capability
- High temperature soldering guaranteed  
250°C/10 seconds at terminals

### Mechanical Data

**Case :** Molded plastic body  
**Terminals :** Solder plated, solderable per MIL-STD-750, Method 2026  
**Polarity :** Polarity symbol marking on body  
**Mounting Position :** Any  
**Weight :** 0.008 ounce, 0.225 grams



### Maximum Ratings And Electrical Characteristics

Ratings at 25°C ambient temperature unless otherwise specified. Single phase half-wave 60Hz, resistive or inductive load, for capacitive load current derate by 20%.

Parameter	SYMBOLS	ES3AC	ES3BC	ES3CC	ES3DC	ES3FC	ES3GC	ES3JC	UNITS	
Maximum repetitive peak reverse voltage	V <sub>RRM</sub>	50	100	150	200	300	400	600	V	
Maximum RMS voltage	V <sub>RMS</sub>	35	70	105	140	210	280	420	V	
Maximum DC blocking voltage	V <sub>DC</sub>	50	100	150	200	300	400	600	V	
Maximum average forward rectified current at T <sub>L</sub> =100°C	I <sub(av)< sub=""></sub(av)<>	3.0							A	
Peak forward surge current, 8.3ms single half sine-wave superimposed on rated load	I <sub>FSM</sub>	100.0							A	
Maximum instantaneous forward voltage at 3.0A	V <sub>F</sub>	0.95			1.25		1.7		V	
Maximum DC reverse current T <sub>A</sub> =25°C at rated DC blocking voltage T <sub>A</sub> =125°C	I <sub>R</sub>	5.0				500				uA
Maximum reverse recovery time (Note 1)	T <sub>rr</sub>	35				ns				
Typical junction capacitance (Note 2)	C <sub>J</sub>	65.0				pF				
Typical thermal resistance	R <sub>qJA</sub>	47.0				°C/W				
Operating junction and storage temperature range	T <sub>J</sub> , T <sub>STG</sub>	-55 to +150							°C	

**Ratings And Characteristic Curves**

FIG. 1- DERATING CURVE OUTPUT RECTIFIED CURRENT

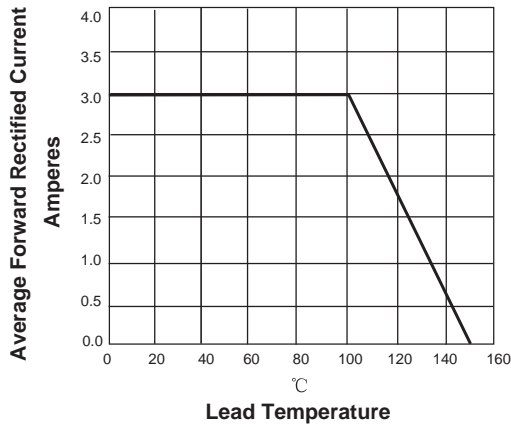


FIG. 2-MAXIMUM NON-REPETITIVE PEAK FORWARD SURGE CURRENT PER LEG

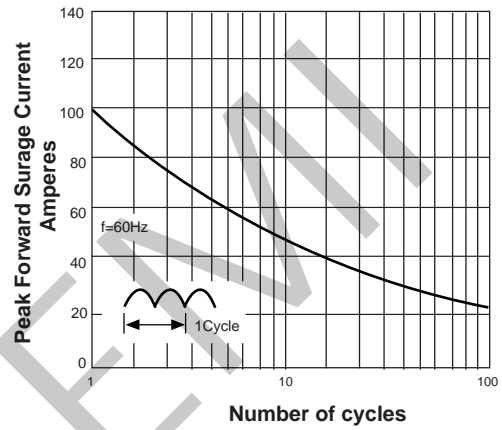


FIG. 3-TYPICAL FORWARD VOLTAGE CHARACTERISTICS

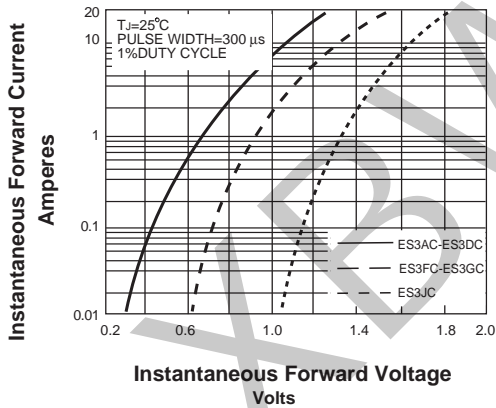


FIG. 4-TYPICAL REVERSE LEAKAGE CHARACTERISTICS

